



GAT MONTHLY MEMBERSHIP PROGRESS REPORT

Results as of: 5/31/2022

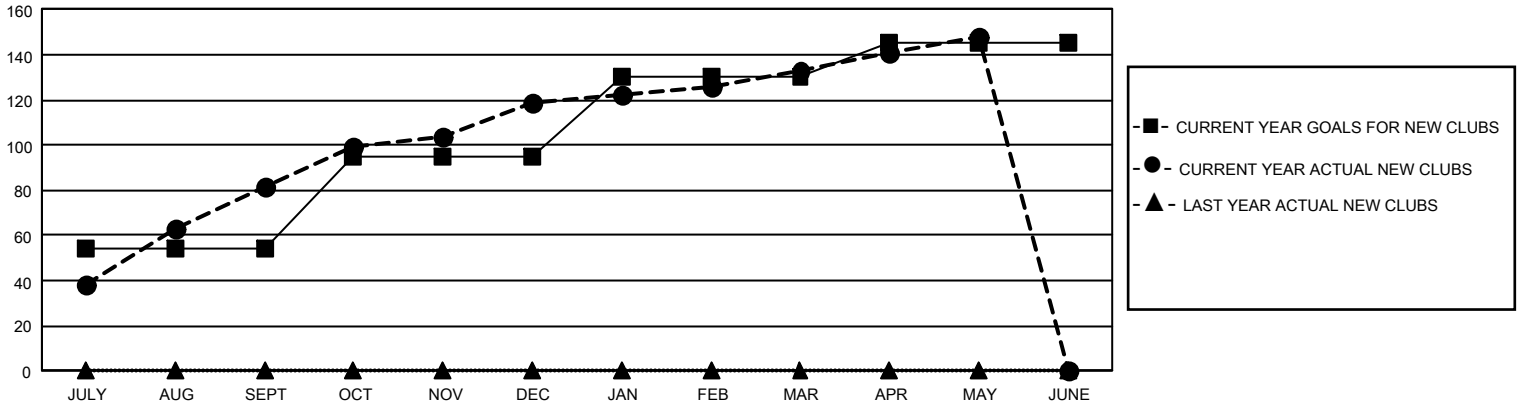
GMT Constitutional Area 6, Group P

REPORT DOES NOT INCLUDE CLUBS IN UNDISTRICTED AREAS.

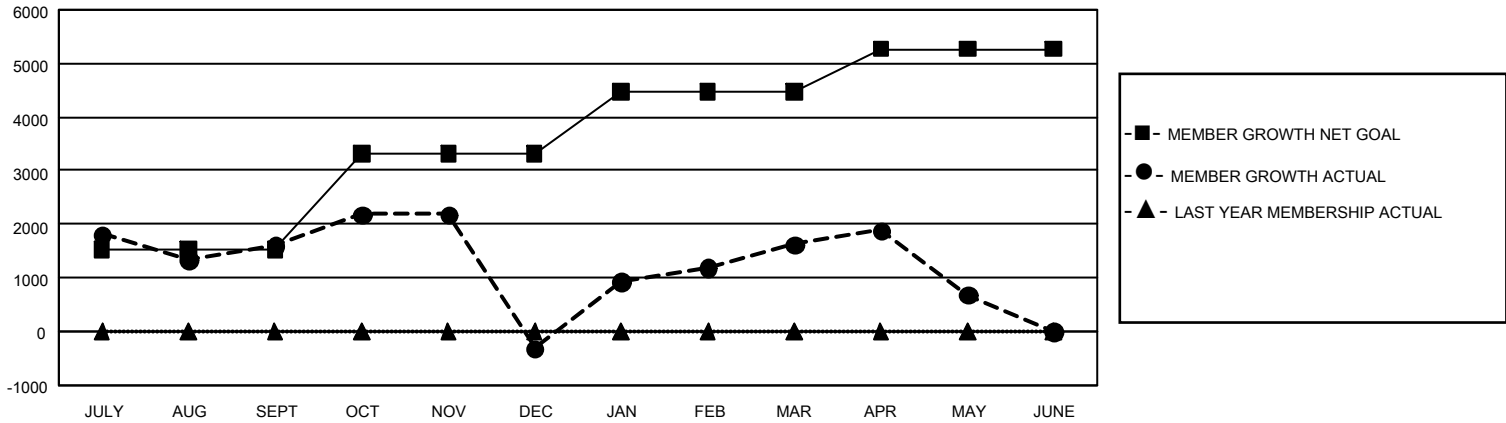
Clubs			
RESULTS FOR 2021-2022			
QUARTER	NEW CLUB GOAL	NEW CLUBS	DROPPED CLUBS
JULY/AUG/SEPT	162	82	53
OCT/NOV/DEC	123	37	63
JAN/FEB/MAR	105	14	13
APR/MAY/JUNE	45	15	15

Members			
RESULTS FOR 2021-2022			
QUARTER	MEMBER GROWTH NET GOAL	MEMBER GROWTH ACTUAL	DROPPED MEMBERS ACTUAL (including transfers)
JULY/AUG/SEPT	1520	6,124	3,711
OCT/NOV/DEC	1800	2,648	4,268
JAN/FEB/MAR	1155	4,536	1,213
APR/MAY/JUNE	790	1,756	2,492

GOALS AND ACTUAL NEW CLUBS CUMULATIVE



GOALS AND ACTUAL MEMBERS CUMULATIVE



DROPPED CLUBS: 144	1,387 CLUBS OF 1,823 ADDED 1 OR MORE NEW MEMBERS	<u>GENDER DISTRIBUTION</u>	
		MALE 50,648 (77.29%) FEMALE 14,855 (22.67%) NON BINARY 20 (0.03%) PREFER NOT TO ANSWER 6 (0.01%)	
<u>DROPPED MEMBERS</u>		CLICK HERE FOR CUMULATIVE MEMBERSHIP DATA	
DECEASED 253 CLUB CANCELLED 4,126 OTHER 7,307 TOTAL 11,686	TOTAL FAMILY UNIT MEMBERS 28,564 FAMILY MEMBERS PAYING HALF DUES 17,528		